

# Welcome to Powerboating for a Cure Poker Run 2015

**Please read this carefully.**

**This year depending on water conditions; the stops have changed and / or are in a different order. Below is the order of stops depending if the water conditions are rough or smooth. The poker run committee will decide which course on day of event and announce it at mandatory captains meeting. See Itinerary in captain's bag or at [www.mapacharity.org](http://www.mapacharity.org)**

## **Smooth Water**

**Start — Waterside Marina**  
**Stop#1—Blue Water Marina**  
**Stop#2—Marina Shores (Lunch)**  
**Stop#3—Rudee's inside Rudee Inlet**  
**Stop#4—Harbour Marine inside Little creek Basin**  
**Finish— Waterside Marina**

## **Rough Water**

**Start—Waterside Marina**  
**Stop#1—Blue Water Marina**  
**Stop#2—Marina Shores (Lunch)**  
**Stop#3— Harbour Marine inside Little creek Basin**  
**Stop#4—Gatlin Pointe Yacht Club -**  
**Finish— Waterside Marina**



# Directions to launch Ramp

## DIRECTIONS TO THE Willoughby Spit Boat Ramp: 1311 Bayville St, Norfolk, VA 23503:

Ramp is at: 1311 Bayville St Norfolk, VA 23503 on the left. The GPS co-ordinates for the ramp - 36.964248, -76.287984

### Coming from/thru Richmond:

Follow I-64 E to Bayville St in Norfolk. Take exit 272 from I-64 E

Toward W Ocean View Ave/Willoughby Spit. This exit is RIGHT AFTER you get off Hampton Roads Bridge Tunnel

Turn left onto US-60 E/Bayville St. and drive on Bayville St to ramp. (13th View and Bayville Street)

Ramp is at: 1311 Bayville St Norfolk, VA 23503 on the right. Use the ramp furthest from the street entrance.

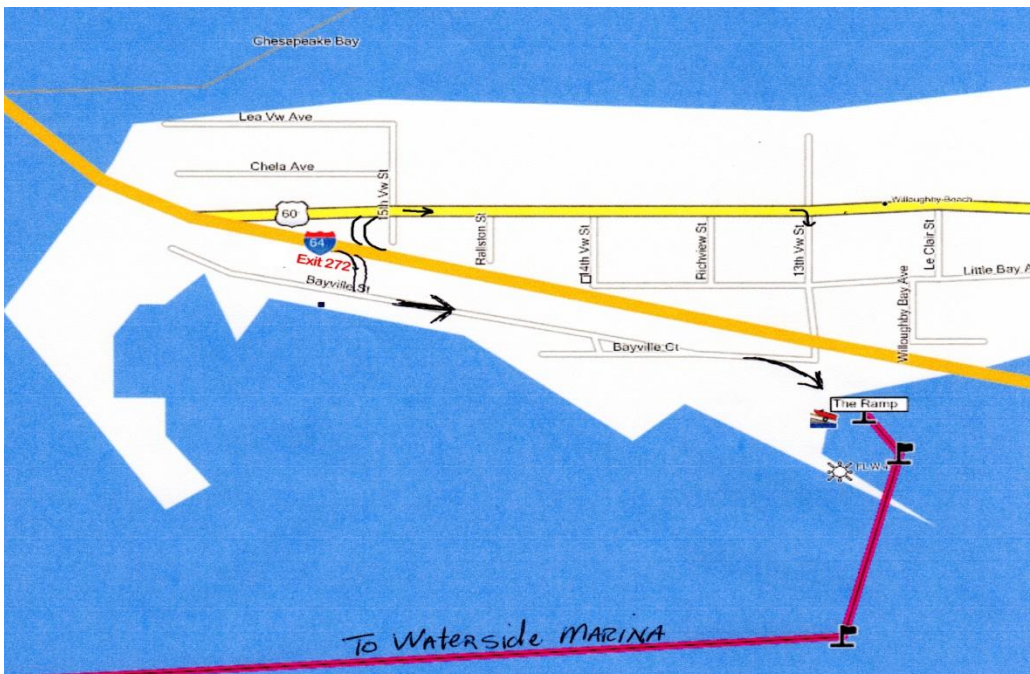
### Coming from 64 West / Norfolk Area:

Last exit before the Hampton Roads Bridge Tunnel -Exit 272 (West Ocean View Ave / Willoughby Spit)

Sharp Right off the interstate / **use caution!!!!** - Right at the bottom of ramp onto West Ocean View

Approximately 1/3 mile to 13th View Street / watch for signs stating "Trucks to I-64" - Right onto 13th View Street

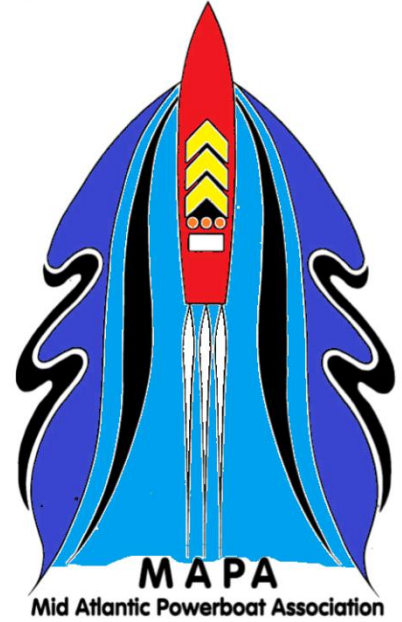
About 1/4 mile / Just pass the underpass - Boat ramp in on the left



We will have a Norfolk Police Officer for security from Thursday at sundown thru Sunday morning at 10 AM

## Map to Waterside Marina from launch Ramp





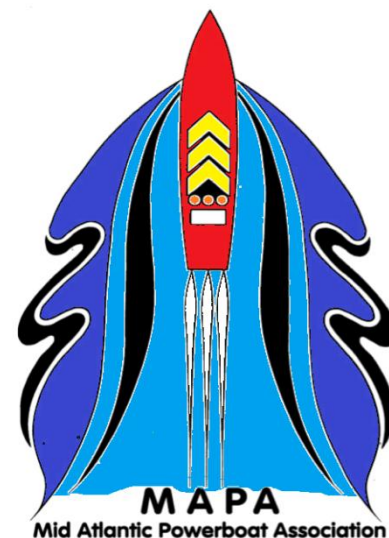
Close up Waterside Marina  
N36 50.595 W76 17.376



### **Start of the Poker Run:**

Leave Waterside Marina and idle to just before no wake zone ends which is marked with buoys. Gather in a group; wait for helo and flag drop then go .

You will be seeing Navy Base very soon on the right—stay away from Navy docks, Navy ships if you get too close, a security RIB boat will have a weapon aimed at you and will approach you with blue lights flashing, if you see this, come off plane and wait for instructions.



**Stop #1** Blue Water Marina, Hampton, VA

N36 01.017 W76 20.472

Coming in, stay on right side of channel, go PAST marina, then turn to port. Passing the marina on your starboard side, you will see a Powerboating for a Cure flag on the T of the dock. Take a Picture of the flag. We have chosen this method so boats don't damage paint on docks, and will allow for easier flow. Come up on plane when it is safe to do so. Next stop—Marina Shores

RED LINE = Entering

ORANGE LINE = Leaving

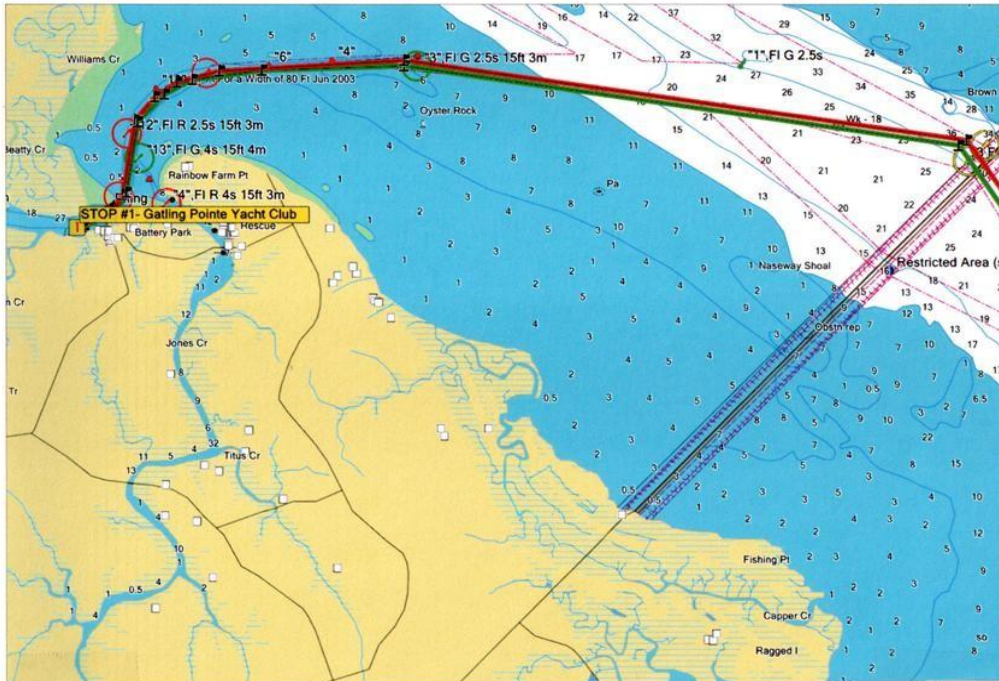


## Lunch Stop: Marina Shores

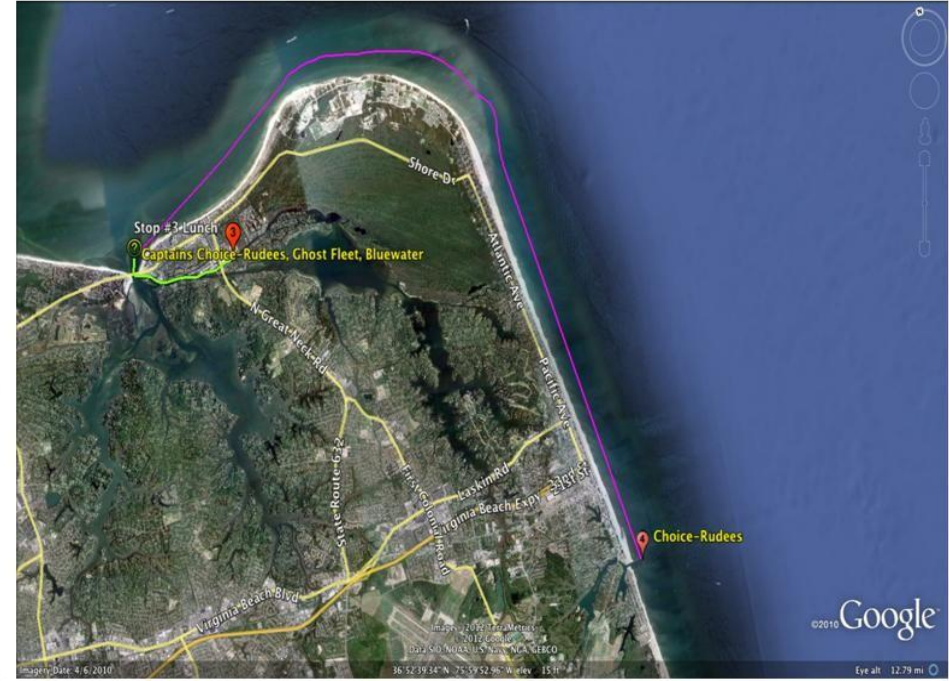
**N 36 54' 18.96" W 76 03' 48.70"**

Lunch will be at Marina Shores. We have "E" dock reserved and there will be additional slips open marked by bright colored paper stapled to open slips. Don't see a bright paper at a slip? Don't tie up. Look for MAPA staff—they will be assisting you to slips and helping you to tie up. Careful in this area—there is usually a STONG current running. Please be aware of the current and be cautious.

# Long Course Weather Dependent



Rough Water Stop #4  
 Gatling Point Yacht Club N36 59.783 W76 34.852  
 Stay on Starboard side of channel, go past marina, turn to port (beware of possible strong current) and snap picture of our flag off starboard side of boat. Follow channel markers and head back to Waterside Marina



Smooth Water Stop #3 Rudee's Marina & Restaurant inside Rudee Inlet N36 49'50.97" W075 58'38.54"  
 Go into Rudee inlet, go under bridge. Our flag will be at Rudee's fuel dock.  
 (Rudee's is last marina on the right) Pass fuel dock, snap picture of our flag, turn to port and head to: stop #4—Harbour Marine in Little Creek Basin

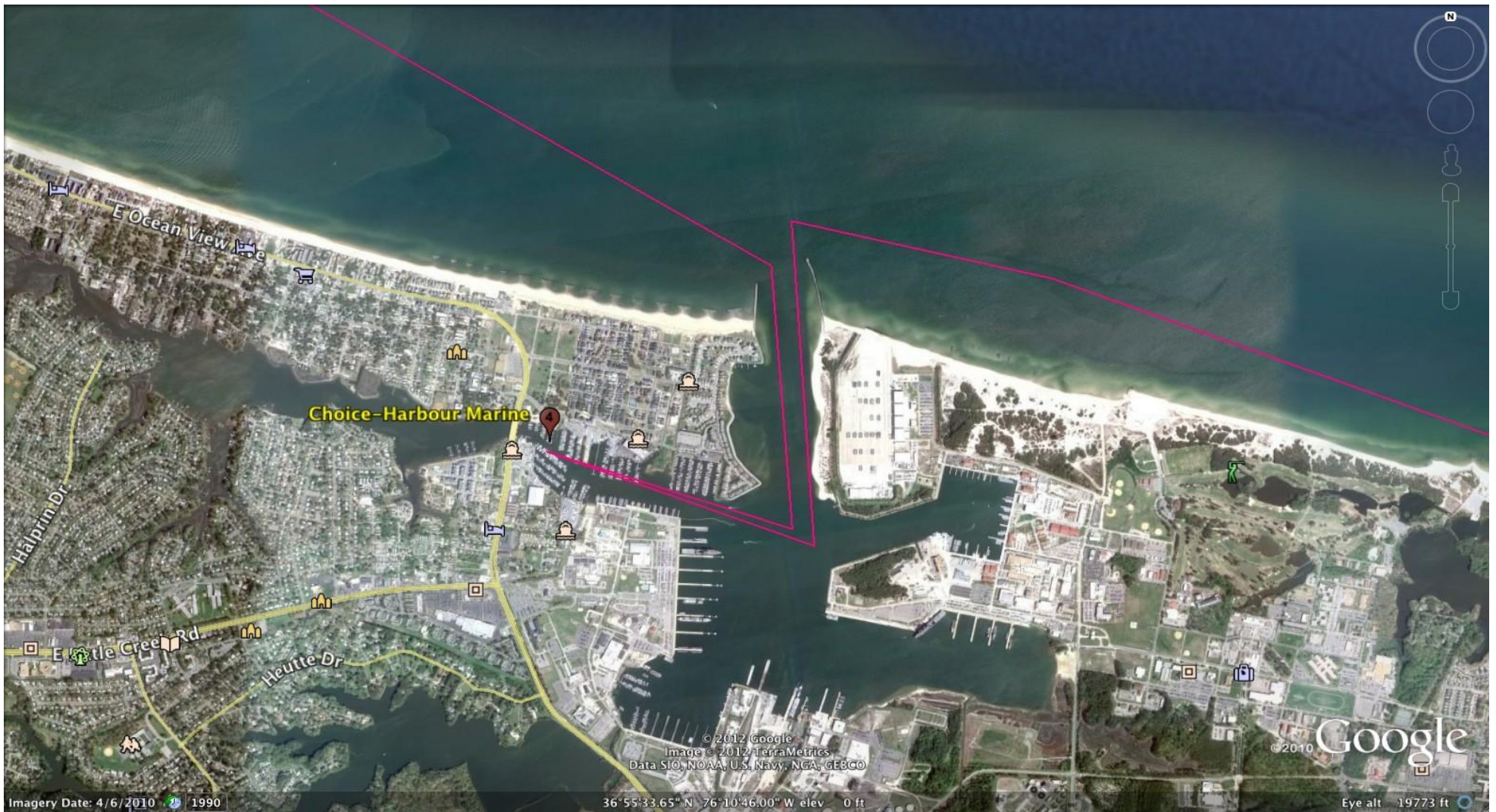
On the day of the poker run, the Poker Run Committee will determine, based on weather, what the long leg of the course will be (Rudees "or" Gatlin Point) and we will announce it at the MANDATORY Captains Meeting. The choice will be weather driven.

If the water looks like this

We won't be going out in the Atlantic Ocean







**Stop #5 (smooth water) or Stop #4 (Rough Water) Harbour Marine Pier N 36 55.506 W 76 11.456**

Stay VERY clear of Navy ships. See flag on pier, snap picture and continue on until you can safely do a 180 degree turn and head back out into the bay. Have incoming boats pass on your port beam.