



Welcome to Powerboating for a Cure Poker Run 2014

Please read this carefully.

This year depending on water conditions; the stops have changed and / or are in a different order. Below is the order of stops depending if the water conditions are rough or smooth. The poker run committee will decide which course on day of event and announce it at mandatory captains meeting. See Itinerary in captains bag or at www.mapacharity.org

Smooth Water

**Start — Waterside Marina
Stop#1—Blue Water Marina
Stop#2—Marina Shores (Lunch)
Stop#3—Rudee's inside Rudee Inlet
Stop#4—Harbour Marine inside Little creek Basin
Finish— Waterside Marina**

Rough Water

**Start—Waterside Marina
Stop#1—Blue Water Marina
Stop#2—Marina Shores (Lunch)
Stop#3— Harbour Marine inside Little creek Basin
Stop#4—Gatlin Pointe Yacht Club -
Finish— Waterside Marina**





Directions to launch Ramp

<u>DIRECTIONS FROM I95 TO THE Portsmouth City Park Ramp:</u> Coming from/thru Richmond: Take I-64 E toward Petersburg/Norfolk Continue to follow I-64 E	63 miles
Merge onto I-664 S/HAMPTON ROADS BELT via EXIT 264 toward DOWNTOWN NEWPORT NEWS/SUFFOLK/CHESAPEAKE	16 miles
Take exit 11B to merge onto Portsmouth Blvd/ VA-337 E toward Portsmouth	3.7 miles.
<i>WATCH FOR SPEED TRAP ON PORTSMOUTH BLVD BRIDGE</i>	
Turn left at traffic light onto City Park Ave	1.3 miles
Continue thru light onto City Park Ave go straight into park, ramp is at end. You will have passed rig parking on your left.	

The GPS co-ordinates for the ramp - W36 50.092 W76 22.292
 The Address for the Ramp is 100 City Park Ave, Portsmouth Va 23701

LAUNCH RAMP: The launch ramp is available at the Portsmouth City Park. There is **NO RAMP FEE** to launch for Powerboating for a Cure Participants.

TRUCK & TRAILER PARKING: Truck and trailer parking available at the Portsmouth City Park where you'll be launching your boat. There is no charge to store your truck and trailer on Friday and Saturday nights.



Close up Waterside Marina
N36 50.595 W76 17.376

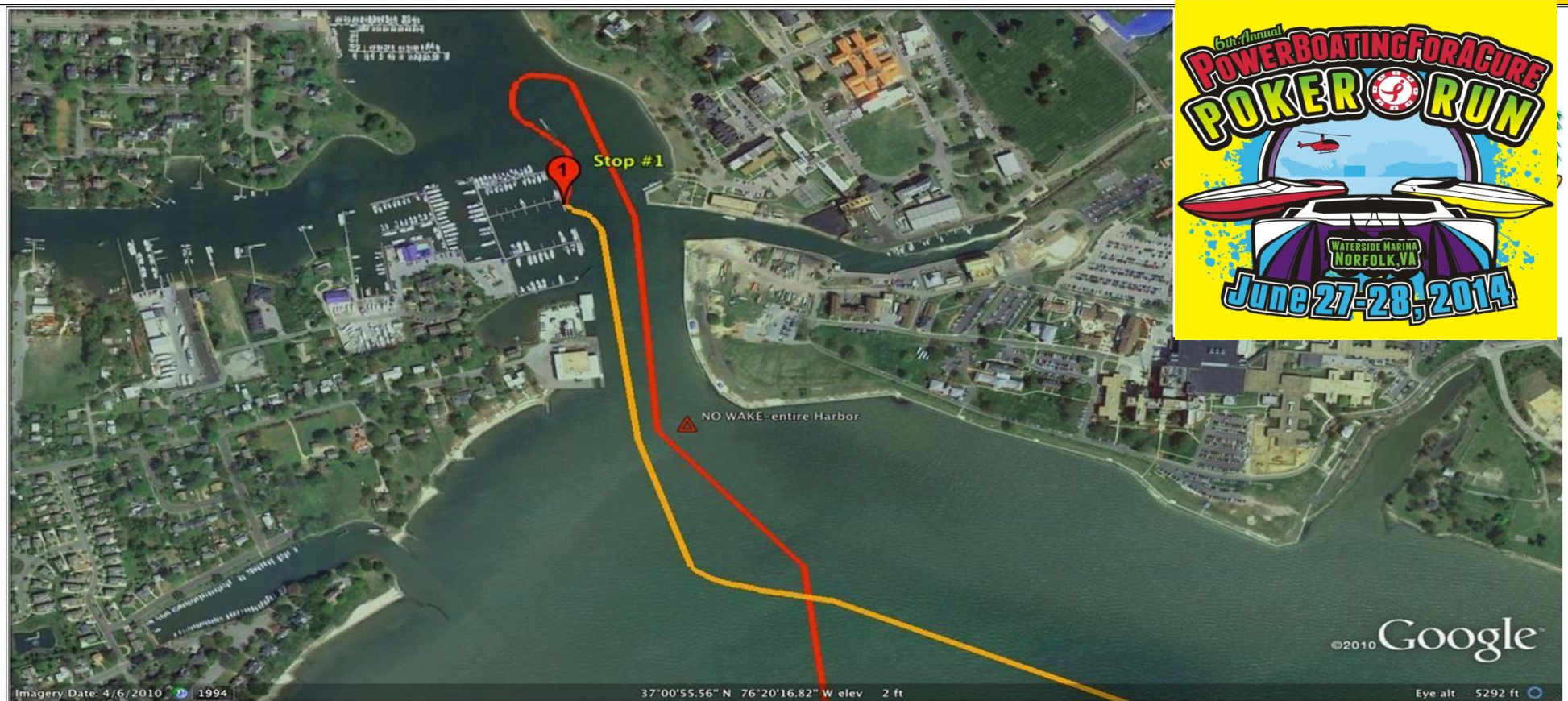




Start of the Poker Run:

Leave Waterside Marina and idle to just before no wake zone ends which is marked with buoys. Gather in a group; wait for helo and flag drop then go .

You will be seeing Navy Base very soon on the right—stay away from Navy docks, Navy ships if you get too close, a security RIB boat will have a weapon aimed at you and will approach you with blue lights flashing, if you see this, come off plane and wait for instructions.



Stop #1 Blue Water Marina, Hampton, VA

N36 01.017 W76 20.472

Coming in, stay on right side of channel, go PAST marina, then turn to port. Passing the marina on your starboard side, you will see a Powerboating for a Cure flag on the T of the dock. Take a Picture of the flag. We have chosen this method so boats don't damage paint on docks, and will allow for easier flow. Come up on plane when it is safe to do so. Next stop—Marina Shores

RED LINE = Entering

ORANGE LINE = Leaving

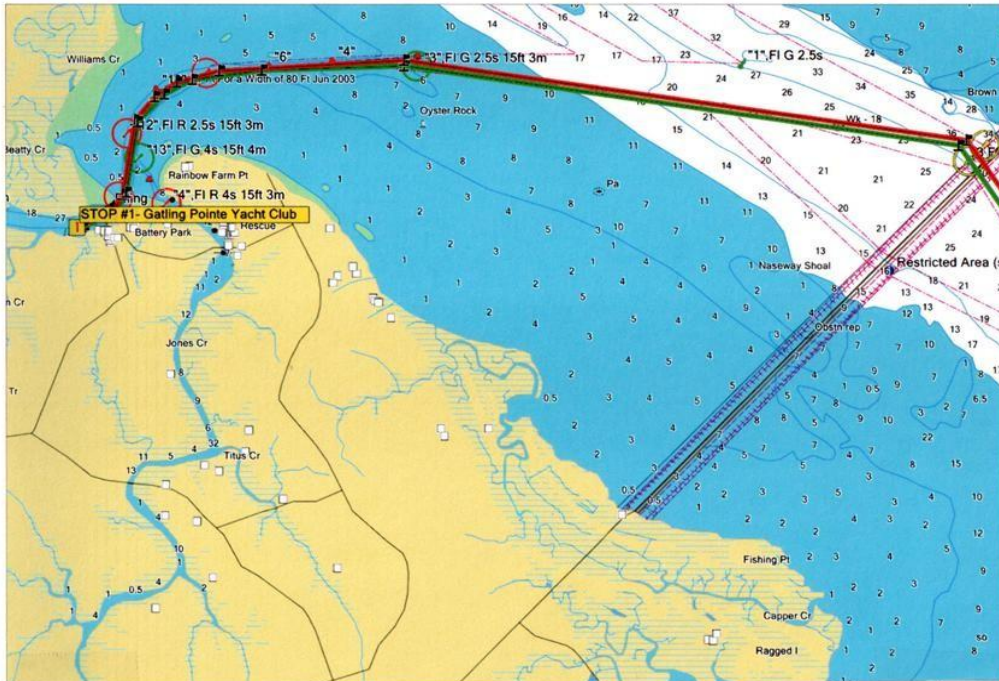


Lunch Stop: Marina Shores

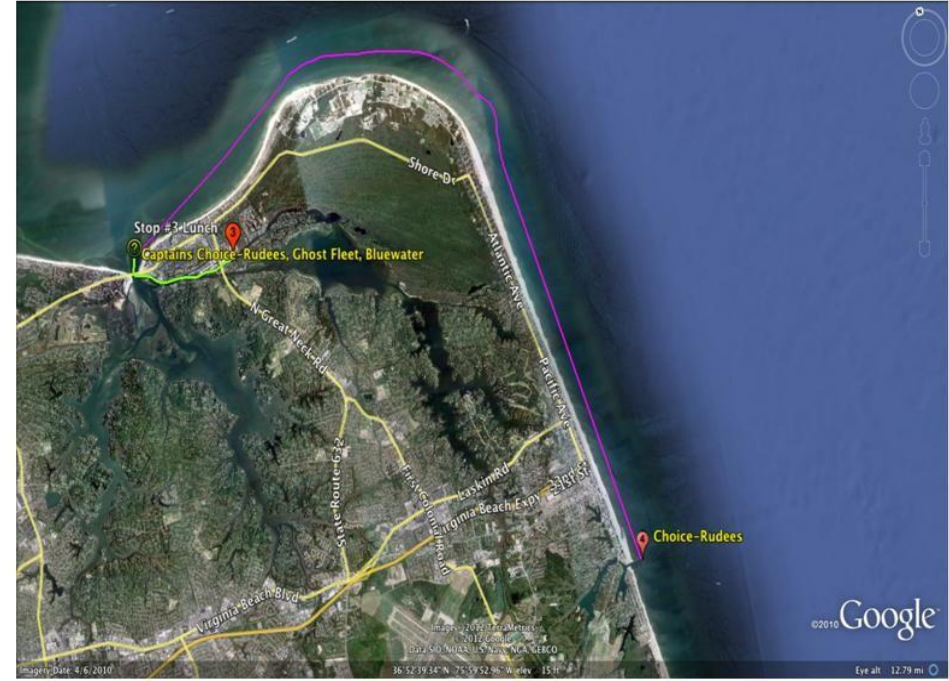
N 36 54' 18.96" W 76 03' 48.70"

Lunch will be at Marina Shores. We have “E” dock reserved and there will be additional slips open marked by bright colored paper stapled to open slips. Don’t see a bright paper at a slip? Don’t tie up. Look for MAPA staff—they will be assisting you to slips and helping you to tie up. Careful in this area—there is usually a STONG current running. Please be aware of the current and be cautious.

Long Course Weather Dependent



Rough Water Stop #4
 Gatling Point Yacht Club N36 59.783 W76 34.852
 Stay on Starboard side of channel, go past marina, turn to port (beware of possible strong current) and snap picture of our flag off starboard side of boat. Follow channel markers and head back to Waterside Marina



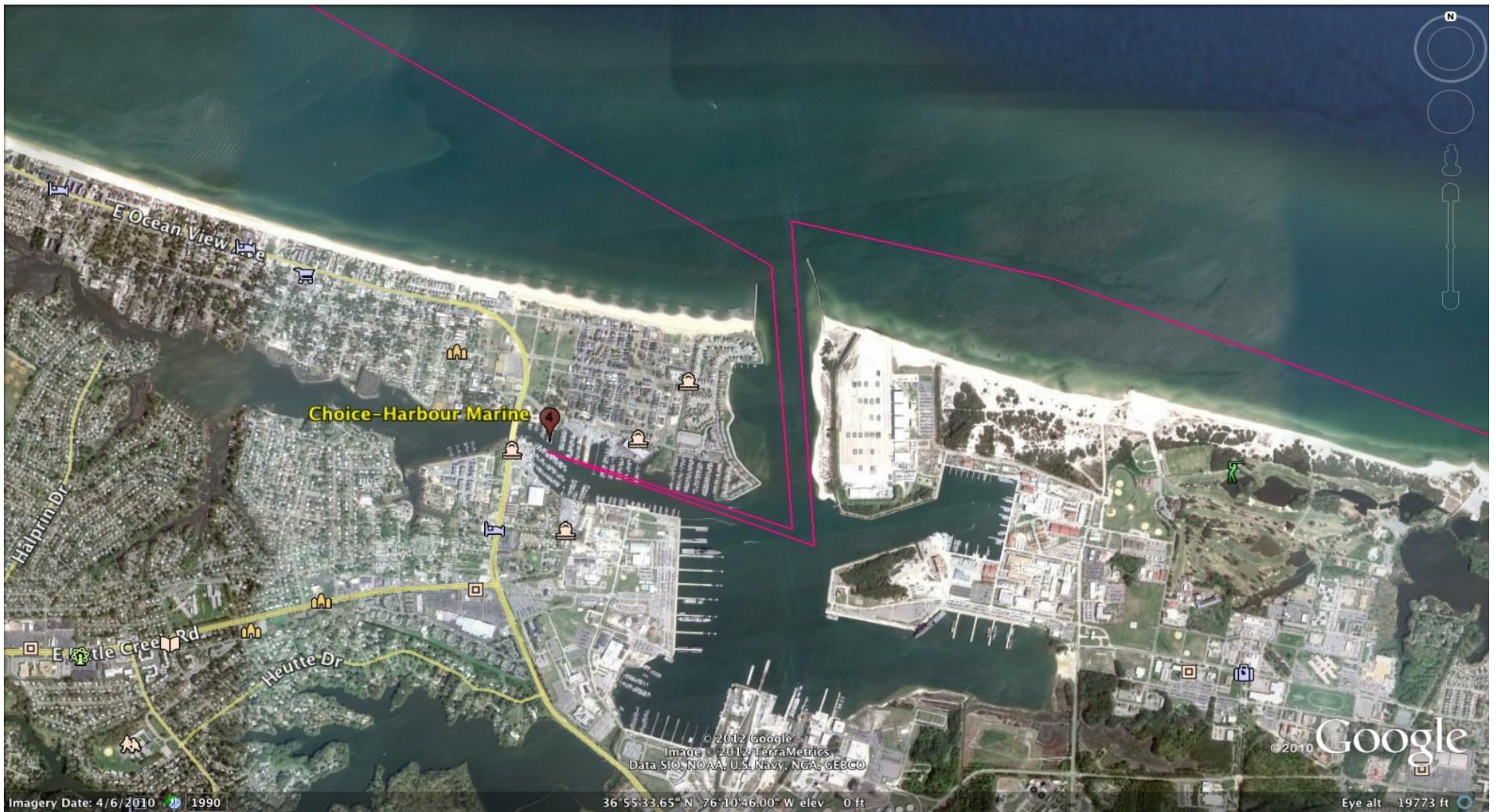
Smooth Water Stop #3 Rudee's Marina & Restaurant inside Rudee Inlet N36 49'50.97" W075 58'38.54"
 Go into Rudee inlet, go under bridge. Our flag will be at Rudee's fuel dock. (Rudee's is last marina on the right) Pass fuel dock, snap picture of our flag, turn to port and head to: stop #4—Harbour Marine in Little Creek Basin

On the day of the poker run, the Poker Run Committee will determine, based on weather, what the long leg of the course will be (Rudees "or" Gatlin Point) and we will announce it at the MANDATORY Captains Meeting. The choice will be weather driven.

If the water looks like this

We won't be going out in the Atlantic Ocean





Stop #5 (smooth water) or Stop #4 (Rough Water) Harbour Marine Pier N 36 55.506 W 76 11.456

Stay VERY clear of Navy ships. See flag on pier, snap picture and continue on until you can safely do a 180 degree turn and head back out into the bay. Have incoming boats pass on your port beam.